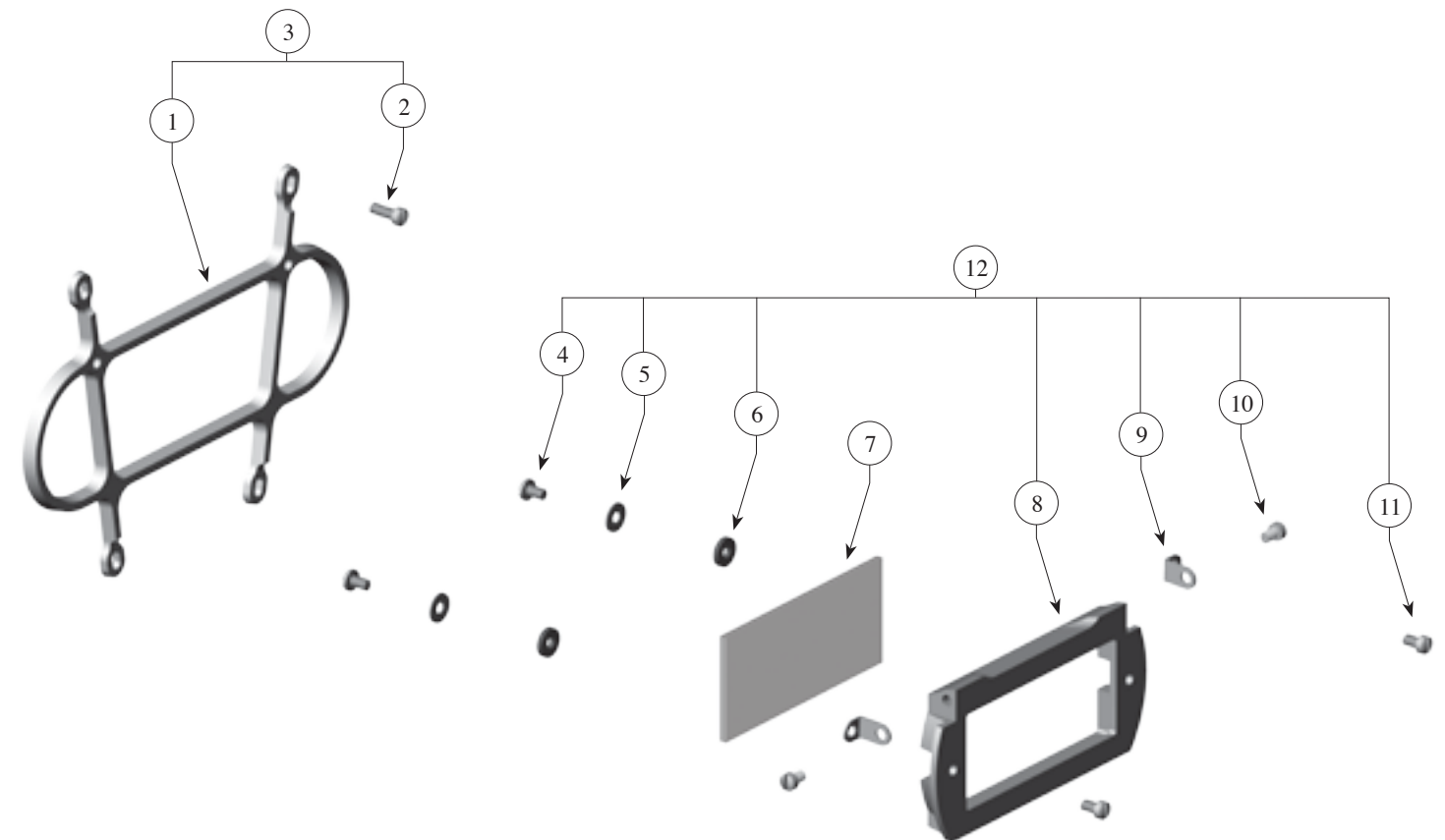




# Miller Diving® 400 Face Guard *P/N 905-137* and Weld Shield *P/N 905-138* Assemblies

Loc. #	Part #	Description
1	960-113	Face Guard
2	930-112	Screw
3	905-137	Face Guard Assembly (required for mounting Weld Shield Assembly #12)
4	330-026	Screw
5	930-423	Washer
6	930-117	Rubber Washer
7	525-405, 406, 407	Lens
8	960-114	Weld Shield
9	940-115	Hinge
10	930-116	Screw
11	930-047	Screw
12	905-138	Weld Shield Assembly (requires #3 for mounting)



**Lenses are available separately as**  
**Part #525- 405 lens light, #525- 406 lens medium, #525- 407 lens dark**

## Product Changes

Following publication of this drawing, certain changes in standard equipment, options, prices and the like may have occurred which would not be included in these pages. Your Authorized Miller dealer is your best source for up-to-date information on any of these products. © Miller Diving, Inc. reserves the right to change product specifications at any time without incurring obligations.



## CAUTION

Use only Kirby Morgan original replacement parts. The use of other manufacturers' parts will interfere with the performance characteristics of your life support equipment and may jeopardize your safety. Additionally, any substitutions will void any warranties offered by KMDSI. When ordering spares, always insist on Kirby Morgan original parts.

## Miller Diving, Inc.®

1430 Jason Way, Santa Maria, CA 93455

Phone: 805/928-7772 Fax: 805/928-0342

[www.KirbyMorgan.com](http://www.KirbyMorgan.com) e-mail: [kmdsi@KirbyMorgan.com](mailto:kmdsi@KirbyMorgan.com)